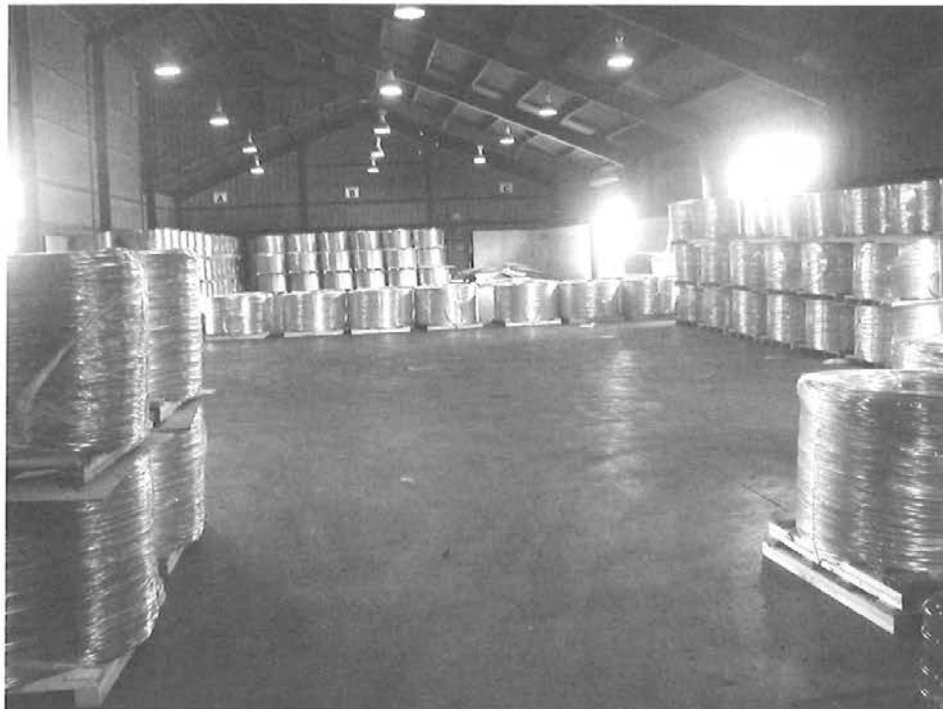


Phelps Dodge Rod Mill, Miami, Arizona, June 2006.

Above, cathode copper moves from the furnace through the continuous-cast, hot-roll process. Below, dozens of 7,500-pound coils of 8mm copper rod produced at the mill sit shrink-wrapped and ready for shipment. Phelps Dodge and other companies use the rod primarily to make wire and cable products.

(Both courtesy of Ronald Limbaugh.)



MINING HISTORY ASSOCIATION
COLORADO SCHOOL OF MINES LIBRARY
1400 ILLINOIS STREET
GOLDEN, CO 80401

www.mininghistoryassociation.org

