

Mining History News

Newsletter of the Mining History Association

March, 2002



Volume 13, Number 1

President's Column

Discovering New Bonanzas: Mining History Publications

I recently received a phone call from the publisher of "MATRIX: A Journal of the History of Minerals." The journal's evocative name reminds me that the word "matrix" refers to the host rock in which mineral specimens are found and exhibited. MATRIX's publisher -- Jay Lininger -- had contacted me at the urging of an MHA member who thought our association and his growing list of MATRIX readers "had something in common." As Mr. Lininger and I spoke, it became apparent that his readers and our members might share many interests. He offered to send me some sample issues, and I accepted his gracious offer. After reading the sample issues that arrived a few days later, I was so impressed that I called Mr. Lininger, agreeing that both his readers and ours could gain much from reading each other's journals. Like our MHA Journal, MATRIX is diverse in its coverage. Some MATRIX articles are biographical (e.g., "Moses F. Austin and the Founding of the Virginia-Missouri Lead Industry" and "Ronald E. Januzzi: A Passionate Student of the Tilly Foster Iron Mine"), while others deal with mines and miners (e.g., "I Owe My Soul to the Company Store: A Brief History of Mining Scrip"). Still others are about particular minerals or mineral collectors. There is no doubt in my mind that MATRIX's

articles dovetail beautifully with the interests of many MHA members.

Those readers familiar with my columns (and presentations) know that I believe that the related subjects of mineralogy and geology are keys to understanding mining history. They also know one of my most passionate desires as president has been to connect MHA with a wider audience that shares similar interests. In this regard, we stand to gain much by reading publications in related fields. The purpose of MATRIX, for example, is to portray the history of mineralogy -- including the historic context of mineral collecting and the mines from which most of the best specimens originate. That makes me sure that MATRIX readers can benefit from knowing more about our own MHA and its informative journal. The articles in our journal are so complementary to MATRIX that they can help those interested in the history of minerals better understand the historic mines (and mining operations) from which mineral specimens often originate. There are other earth science and earth history journals out there that MHA members might like to know about, and their readers about us. With this in mind, I've requested that we put an important item on the agenda for our annual meeting: Authorization to provide our mailing list to other earth science/history publishers who request it. We would do this only after our members approve, and if those same publishers permit MHA to send their subscribers information about MHA, in-

cluding our new membership application brochure.

This will be one of several important items discussed at our business meeting, so please be sure to mark our MHA meeting on your calendar: Wallace, Idaho (June 19-23, 2002). This being my last column as president, I now prepare to turn the reins over to incoming MHA president Jeremy Mouat. In the next issue of this newsletter, he will tell you more about our annual meeting and other important matters under development for MHA.

Richard Francaviglia
University of Texas-Arlington

Inside this issue:

President's Column	1
Organization Notes	2
Meeting Agenda	3
Map of Wallace	4
News & Drill Bits	5
Museum & Book Notes	6
Registration Form	7

Mineral Magazines

The recent issue of **MATRIX**, which Richard Francaviglia talked about in this issue's President's Column, has a series of articles of interest to MHA members relating to the mineral history of Leadville, Colorado. The lead article titled *The Legacy of H.A.W. Tabor and its Impact Upon the 19th Century History of Leadville* was written by the journal's editor Jay Lininger. Subscription rates for **MATRIX** are as follows: U.S. rate \$24 per year; Non U.S. rate \$30 per year. A subscription includes an entire four-issue volume regardless of the date of subscription. Single issue price is \$7.00. Address all correspondence to: **MATRIX Publishing Company**, P.O. Box 129, Dillsburg, PA 17019-0129, 717/432-7201, e-mail: jlininger@matrixpublishing.com; website: www.matrixpublishing.com.

There are two other mineral magazines published in the United States that have many articles of interest to mining historians. The recent special issue of **The Mineralogical Record** (January-February 2002, Vol. 33, no. 1) features a lavishly illustrated article titled *Butte, Montana: Minerals, Mines, and History* by Robert Jenkins and Jerry Lorengo. This should be of special interest to those who attended last year's MHA meeting in Butte. Single copies of this issue are available, while supply lasts, at \$15 per copy, plus \$1 postage from: **The Mineralogical Record**, P.O. Box 35565, Tucson, AZ, 85740 (520) 287-6709; e-mail: minrec@aol.com. Subscription price for one year (six issues) is \$51 (in the U.S.), \$55 (outside the U.S.) for individuals.

The upcoming issue of **Rock & Minerals** will have an article by MHA member Tom Rosemeyer titled *History, Geology, and Mineralogy of the Brooklyn Mine, San Juan County, Colorado*. Tom has written numerous articles for this magazine over the years about the mines in the San Juan Mountains of Colorado, and the Copper Country of Michigan. Another MHA member

from Colorado, Ed Raines, has written a number of articles in other issues of **Rocks & Minerals** about the mining districts in his home state. His two-part article, *The Mineralogy, Geology, and Mining History of the Telluride District, San Miguel County, Colorado*, was published in the September/October and November/December 2000 issues. The one-year subscription rate to **Rocks & Minerals** (six issues) is \$46 in the U.S.; \$56 outside the U.S. Contact: Heldref Publications, P.O. 18798, Washington, D.C., 20078-5806, (800)365-9753, website: www.rocksandminerals.org.

Organization Notes

Wallace Lodging

The Wallace Inn will be the center for most convention activities for our annual meeting in June. They have reserved some rooms for MHA members, but because of another event scheduled at the same time, they cannot accommodate all of us. First come, first served, so call (208) 752-1252. The Stardust Motel (208) 752-1213 is modern and economical and only five blocks away. The Brook's Hotel, (208) 556-1571, is only six blocks away, and it too is economical with recently re-

modeled rooms (some with kitchens). Seven blocks from the convention headquarters is the Ryan Hotel, (208) 753-6001. It is your most economical choice; the rooms are quite nice, and all but three have private bath or shower. If you prefer a Bed & Breakfast, check out the 100-year old Beale House, (208) 752-7151. It is about four blocks from the Wallace Inn. There are other motels in Kellogg (10 miles west on I-90), if you have transportation.

MHA Journal

By now all MHA members should have received The Eighth Annual (2001) Journal of The Mining History Association. Thanks go to new Journal Editor, Eric Clements, for a fine job. Several Journals have been returned with missing mailing labels. If you have not received your Journal, please send a note to Mining History Association, P. O. Box 150300, Denver, CO 80215, and a new copy will be sent to you.

2002 Dues Are Due

Please check the mailing label on this issue. Your name should be followed by "2002" if you are up to date. If not, please send your renewal check for \$25 (\$35 international) to remain on the active list of MHA.

Be Sure To Attend
the
Thirteenth Annual Meeting
of the
Mining History Association



June 19-23, 2002
Wallace, Idaho

Thirteenth Annual Meeting of the Mining History Association, Wallace, Idaho

Wednesday, June 19

4:00-6:00 pm.

Early-bird registration, Wallace Inn

Thursday, June 20

7:00 am

Tour of deep underground operating mine (all participants must be at least 18 years old).

10:00 am to Noon

Continued registration at the Wallace Inn

11:45 am-1:15 pm

Lunch on your own

1:15- 2:30 pm

Bus tour of Burk Canyon

1:30-5:00 pm

Registration continues, Wallace Inn

3:00-4:30 pm

Guided tour of Mining Museum by Ed Eckel

5:30-6:00 pm

Trolley tour of Historic Wallace-Group A

6:00-6:30 pm

Trolley tour of Historic Wallace-Group B

6:30-7:00 pm

Trolley tour of Historic Wallace-Group C

7:00 pm-???

Reception, Visitor Center or Wallace Inn depending on weather. Includes snacks and drinks.

Friday, June 21

7:00-8:00 am

MHA Journal Editorial Board Breakfast (if needed), Silver Room, Wallace Inn

8:00 am-5:00 pm

Continued registration at the Wallace Inn

9:00-10:00 am

OPENING SESSION

Jeremy Mouat, *Opening statement, introductions, announcements, etc.*

Earl Bennett, *A Historical Overview of the Coeur d'Alene Mining District.*

Coffee Break

10:00-10:15 am

SECOND SESSION, Early History of the Coeur d'Alenes: Discovery of Gold on the North Fork
Art Randall, *History of Gold Mining of the Near Ghost Towns of Eagle City and Murray, with the story of Wyatt S. Earp.*

10:15 am-Noon

Keith R. Long, *Gold Mining Around Murray, Idaho: The Coeur d'Alene's Forgotten Sideshow.*

Fritz E. Wolff, *Chris and the Bedroom Gold Mine, The Vikings, and Terrible Edith-A mine, and a Woman of Only Modest Virtue.*

Noon

Miner's Lunch, Speaker: Earl Bennett, *An Overview History of the South Fork (Silver Belt).*

2:00-3:45 pm

THIRD SESSION, Silver Capital of the World

James D. Sell, *Mine Finding Burros-Their Partners and Friends.*

Peter L. Siems, *The History of the Sunshine Mine, Coeur d'Alene District, Idaho.*

James Warren Andrews, *The Sunshine Mine Fire, May 2, 1972.*

3:45-4:00 pm

Coffee Break

4:00 pm

Business Meeting

7:00 pm

Awards Banquet at Wallace Elks Club, Speaker: Katherine G. Aiken, *The Bunker Hill Mine.*

Saturday, June 22

8:30-9:45 am

THIRD SESSION, Further South to Colorado and Utah

Ed Raines, *Mining History and Geology of Caribou, Grand Island District, Boulder Co., Colorado.*

Silvia Pettem, *Cornwall to Caribou: Remembering What It Was Like for the Women.*

Robert Sorgenfrei, *Anatomy of a Mine Report; John H. Marks' Report on the San Juan Placers, Gabel Mining District, Utah, 1909.*

9:45-10:15 am

Coffee Break

10:15 am-Noon

FIFTH SESSION, London, Maryland, Nevada and Beyond

Ian Phimister & Jeremy Mouat, *Minimizing Risk? Mining Engineers and British Overseas Investment, 1894-1914.*

Johnny Johnson, *Maryland's Choate Chromite Mine, 1830-1920.*

Eugene J. Michal, *Nevada Silver: Win Some, Lose Some.*

Erik Nordberg, *Something About Salt???*

Noon- 2:00 pm

Presidential Lunch at Wallace Inn

2:00-3:15 pm

SIXTH SESSION, A Round Table on the Environmental History of Mining

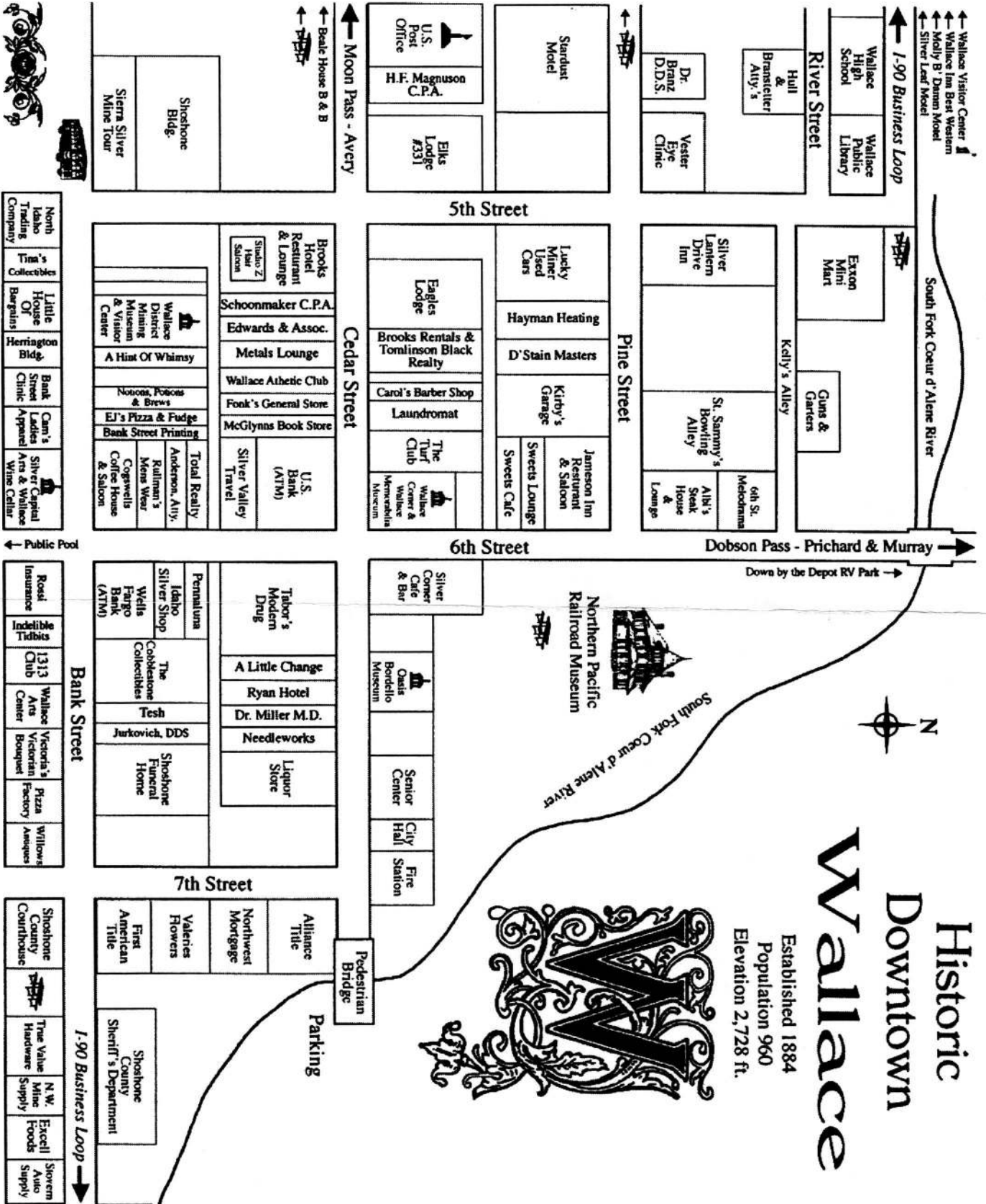
Kent A. Curtis, Katherine G. Morrissey, Fredric L. Quivik, Timothy LeCain

3:15-3:30 pm

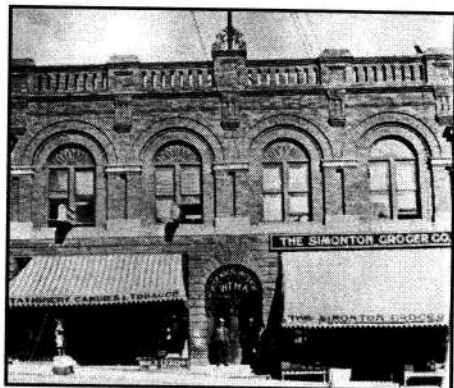
Coffee Break

Continued on Page 7...

Wallace Inn Best Western Registration Site



News



Miners's Union Hall, Then...



... and Now

Courtesy: Ed and Cherry Hunter

One of Victor, Colorado's most historic buildings will receive some much needed attention, thanks to a grant from the Colorado Historical Society's State Historical Fund. The **Miner's Union Hall** will be the subject of a historical structure assessment. The Southern Teller County Focus Group sought and received the state grant in order to determine the structural integrity of the building, and to develop engineering and architectural options for it. The Union Hall, which is owned by Joe and Margie Stevens, was built in 1899 after the great fire that destroyed much of Victor. The building has housed many businesses over the years, but its most significant function was as the headquarters of the Western Federation of Miners from 1900 through 1904. The Labor War of 1903-1904 was a period of unsettling and often violent events, as the union and mine owners clashed over wages and working conditions. The Union Hall was located on the second floor of the building.

The \$7,095 grant will allow professional architects and engineers to assess the condition of the building, which has been severely neglected over time. Until the Stevens' purchased the building in March of 2000, the Union Hall stood with open windows and doors covered with plywood that allowed access to everything under the Victor sky. Thanks to the Stevens', the building has been sealed up and most of the roof repaired. The Stevens' hope to find funding and support to rehabilitate the Union Hall for future retail and housing uses that will help the city in its revitalization efforts.

Eleanor Swent, the project director of the **Western Mining Oral History Series**, sent in the following 2001 progress report. "Thanks to advisors Michael Bickers and William Humphrey, the Hearst Foundation has given \$100,000 to spearhead an endowment fund to perpetuate the mining oral histories. In 1985, when we began with \$2,000 from the San Francisco section of AIME, we named the project "Western Mining in the Twentieth Century", and planned for five oral histories. Now, in another century, with fifty-six volumes completed, we are recognized as one of the premier collections of mining history records in North America. The following individuals have already added to the Hearst endowment fund: Frank Aplan, Margaret Fuerstenau, James Jensen, and David Lowell, swelling the total to over \$110,000. Donations to the series are welcome, and are fully tax deductible. Checks should be made out to: UC Regents-Mining History Endowment Fund, and sent to Regional Oral History Office University of California, 486 The Bancroft Library, Berkley, CA 94720-6000."

Duane Smith will be the keynote speaker at a symposium on the Homestake Legacy. Just recently, the Homestake gold mine in Lead, South Dakota

hoisted and crushed its last ore after more than 125 years of operation. The Case Library of Western Historical Studies on the campus of Black Hills State University (BHSU), Spearfish, South Dakota is sponsoring a symposium to review some of that great mine's past. Duane will start the conference with his talk titled: "Here's to low grade ore, and plenty of it: the Homestake's Heritage." He will be followed by some video presentations done by Wayne Paananen of Historical Footprints, who has filmed the Homestake's operations for the past 16 years. Other presentations are also anticipated. The symposium will be held Friday afternoon, May 3, from 1 to 4 pm in the Jacket Legacy Room in the David B. Miller Student Union on the BHSU campus. There is no charge for attendance. For more information, contact David Wolff at DavidWolff@bhsu.edu.

Drill Bits

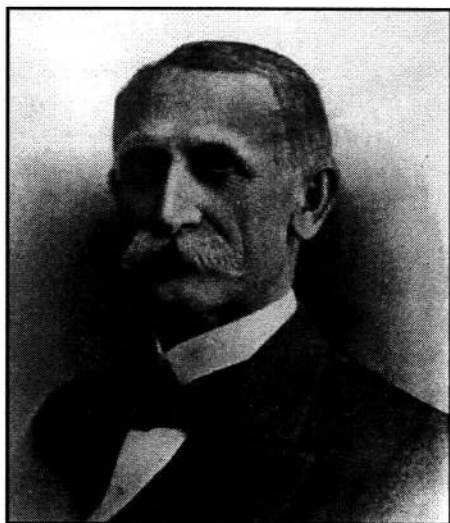


This year marks one hundred years since the first claims were staked in December, 1902 in Goldfield, Nevada. Goldfield will celebrate its centennial on August 23-25.

Tom Lowe, Assistant Manager, Banack State Park, Montana, reports that they are in the process of opening an old gold mine for public tours. He would like to know if anyone in MHA can suggest ways to set up tours in the mine. Contact Tom at banack@montana.com.

Past MHA President, Sally Zanjani will receive the \$10,000 Evans Biography Award for her newest book, *Sarah Winnemucca*. She is currently working on a book about early prospectors on the Comstock. Congratulations, Sally.

Museum Notes



Winfield Scott Stratton

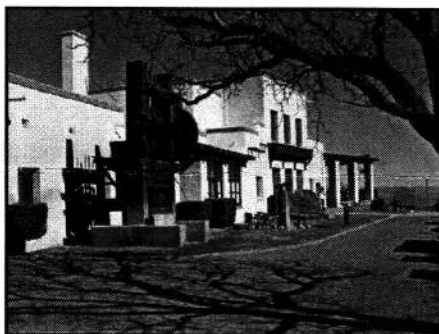
The Western Museum of Mining and Industry (Colorado Springs, Colorado) is pleased to announce that the majority of the W.S. Stratton Mining Collection is now open on a limited basis to researchers. Consisting of 87 cubic feet of processed papers; 9 boxes of oversized papers; 351 ledgers and letter books; 30 books; 15 photographs and 1,500 maps, blueprints and drawings, the archival collection pertains to Mr. Stratton's mining operations and associated businesses (1890-1976). The majority of these operations were in the Cripple Creek Mining District. However, some records concerning mining operations in other Colorado districts and in Mexico are included.

The Myron Stratton Home donated the collection to WMMI on August 2, 1999. The 18-month project of processing and cataloguing the archives was made possible through very generous donations from The Gates Family Foundation, The Myron Stratton Home, the H. Case Stone Trust, and museum members.

Financial support is still needed to give the researching public full access to this important window to the history of mining in the American West. Only \$2,500 will allow staff to construct a Research Room at the Collections

Building. Welcome donations of furniture and files for the facility were given by the Newmont Mining Corporation last fall. Only 427 of the 1,500 maps, plats, and drawings in the collection have been processed. A gift of \$10 per map, or \$15,000 is needed before this portion of the W.S. Stratton Mining Collection can be opened to the public view.

A 209-page Finding Guide (index) is available for researchers on site and for purchase (\$65 + \$10 shipping in the U. S.) Research appointments may be made by contacting Terry Girourard, Curator of Collections, at (719)495-2182, wmmicurator@aol.com, or WMMI, 1025 North Gate Road, Colorado Springs, CO 80921.



James Douglas Mansion

The Jerome State Park recently opened after a 8-month improvement project. The park, located in Jerome, Arizona, began as the James Douglas Mansion which was built in 1916 from adobe brick. The luxurious home served as a place where visiting mining officials and investors could stay while traveling through Jerome. James Douglas helped bring the United Verde Extension into prosperity between 1914 and 1938.

The latest improvements at the park include a new parking lot, a new panoramic photo display, and an improved theater. Future projects include a display of a Jerome bottle collection, a display of old mining stock certificates, and a display on the Jerome hospitals.

Book Notes

The New Mexico Genealogical Society has announced the completion and publication of a two-year project, *New Mexico Mining Fatalities and Accidents, 1894-1925*, by Karen Stein Daniel, C.G. Taken from material found in government reports, and supplemented by death certificates and newspaper accounts, this work addresses by name all known fatalities and mining accident injury victims in New Mexico during the period 1894 through 1925. 255 pages, map, surname index, spiral binding, \$24. No additional charge for sales tax or shipping. New Mexico Genealogical Society, P.O. Box 8283, Albuquerque, NM 87198-8283; website: www.nmgs.org.

The South Dakota State Historical Society is the publisher of a new book, *Chasing the Glitter: Black Hills Mining, 1874-1959* by Richmond Clow. The book is an illustrated history of mineral-extraction processes, primarily gold-recovery methods, which were invented and practiced in the Black Hills of South Dakota. 216 pages, 91 illustrations, bibliography, index. \$59.95, hardcover; \$29.95, paperback. Available from the SDSHS Press, South Dakota State Historical Society, 900 Governors Drive, Pierre, SD 57501-2217, (605)773-2217. Richmond L. Clow is professor of Native American Studies at the University of Montana in Missoula. He has written numerous articles on American Indian and Black Hills topics. *Chasing the Glitter* is volume two in the South Dakota Historical Preservation Series.

Fred Holabird Americana is offering a hardbound reprint of the original 1883 *Colorado Mining Directory* with brown cover and gilt lettering, and has a limited supply available for \$450. The 919 pages document the early mining days of Colorado. For information contact: Fred Holabird Americana, 3555 Airway Dr., #308, Reno, NV 89511, (775)852-8822, fred@holabird.org.

Mining History News

3:30-5:00 pm SEVENTH SESSION
Elenor Swent, *Homestake Memories in Video*.
Peter Siems, *A Walking Tour in Freiberg and Environs, Saxony, Germany*.
Noel Kirshenbaum, *New Creative Technology*.

7:00 pm Dinner and Slide Show:
Fritz Wolf and Terry Abraham, *The Barnard-Stockbridge Photo Collection*, 35 mm slide presentation.
Sunday, June 23 Bus Tours of the Coeur d'Alenes. Bus tours of the Gold Belt (North Fork) and Silver Valley (South Fork).

8:00 am Group A departs to Mullan, North Fork, and finally the Spokane Airport.
9:00 am Group B departs for Burke, West Silver Valley, North Fork and back to the Wallace Inn.

Pre-Registration Form
Thirteenth Annual Meeting of the Mining History Association
June 19-23, 2002, Wallace, Idaho

Meeting Attendee Information

Name _____ Spouse _____
Address _____
Daytime Phone or email _____

Meeting Event/Fees

Conference Registration (no charge for spouse)	\$30 per person	_____
Thursday Bus to Mine (private vehicles not allowed)	\$5 per person	_____
Thursday Bus Tour of Burke Canyon	\$5 per person	_____
Thursday Bus Spokane Airport (if a min. of 15 sign up)	\$20 per person	_____
Miner's Lunch (Friday)	\$15 per person	_____
Awards Banquet (Friday)	\$20 per person	_____
Presidential Lunch (Saturday)	\$15 per person	_____
Saturday Dinner	\$20 per person	_____
Sunday Tours: Group A	\$20 per person	_____
or	or	
Group B	\$20 per person	_____
Total		_____

Please mail pre-registration form and check payable to the Mining History Association to:
Mining History Association, Wallace Conference
P.O. Box 150300
Denver, CO 80215



Mining History Association

Post Office Box 150300
Denver, Colorado 80215

www.lib.mtu.edu/mha/mha.htm

Membership in the Mining History Association is open to all interested in the history of mining. Dues are \$25 (\$35 international). Membership includes the *Mining History News* quarterly newsletter and the *Mining History Journal*. As in the past, MHA will host an annual conference, which includes tours, symposiums, and social events.

Officers 2001

Jeremy Mouat, President
Ed Hunter, Vice-President
Robert L. Spude, Secretary
James Fell, Treasurer

Council

Richard Francaviglia, Past President
Glen Cook, 2000-2002
Homer Milford, 2000-2002
Eleanor Swent, 2001-2003
Chris Huggard, 2001-2003
Ruth Ann Gardner 2002-2004
James McBride 2002-2004
James Sell 2002-2004

Membership Chair

Robert Sorgenfrei

Denver Office Coordinator

Lysa Wegman-French

Mining History News

Published quarterly



Editors

Mark and Karen Vendl
1136 Kemman Ave.
LaGrange Park, IL 60526
mkvendl@earthlink.net

Deadline for submissions
for the next issue of the
Mining History News

June 1, 2002



Mining History Association

Post Office Box 150300
Denver, Colorado 80215

FIRST CLASS MAIL