



# Mining History News

Newsletter of the Mining History Association

September 2004



Volume 15, Number 3

## MHA Conferences to Go East then West

The Association concluded an outstanding meeting in Farmington, Missouri. Once again I want to express our sincere appreciation to Barbara and Eric Clements, who served as local arrangements co-chairs, guides and the genial shift bosses for our meeting in southeast Missouri. Marking only our second conference in the central mining regions, the event was a decided success with registration and participation comparable to other recent conferences. The informative excursions to eastern Missouri and western Illinois mining sites added to the success of the program, and, as always, there was one event (the slip-sliding bus on Thursday's trip) that will add to the cherished lore of the MHA conferences.

At the conference the Council reaffirmed and the annual meeting confirmed our decision to reverse Horace Greeley's advice for at least one more year as we travel to Scranton, Pennsylvania, for the meeting in 2005. Johnny Johnsson brought his entire family to advertise the meeting and presented a special family skit to encourage us to learn more about eastern mining. He encourages us to think about making an excursion that could include travel to the historic sites that defined American history in the 17<sup>th</sup>-20<sup>th</sup> centuries. For those of us used to the West's wide-open spaces there are excellent public transportation systems that link Washington, Philadelphia, New York and even Providence and Boston. Major his-

toric sites of the Revolution and Civil War abound, but there are also numerous locations that testify to social, industrial and technological developments. I will ask Bob Spude to provide us with a brief essay on some of the most important National Parks and Historic Sites that could be visited if you spent a week or two in Connecticut, Rhode Island, New York, New Jersey, Pennsylvania, Maryland, Virginia and that often overlooked state of Delaware. If you like to stay in homey B&B's, this is a virtual paradise of interesting homes, historic taverns, converted barns and industrial buildings. Richard Francaviglia, Program Chair for the Pennsylvania meeting, is actively soliciting suggestions for papers and presentations at the Scranton meeting. You can contact him by writing to him at the University of Texas at Arlington or sending correspondence to his home 5119 Kee Brook Ct., Arlington, TX 76017.

In 2006 we will return to the mountain states as the Council endorsed a proposal from Jim McBride to take our meeting to Globe, Arizona. Like Cripple Creek, Jim promises both gambling at the casino and an excellent mining community. As we look toward the future, you can expect to hear more about our plans for the Globe meeting. Bob Trenert has agreed to serve as the program committee chair for the Globe meeting. Juneau, Alaska has contacted me with a proposal for our conference in 2007. The Juneau tourist bureau believes that their

city offers special features that will interest us. They have identified both historic and active mining sites near Juneau. I will provide more information about the Juneau proposal in my next column. When I mentioned a Juneau conference at the annual meeting, most present indicated that they would plan to attend. Juneau, like Scranton, is far removed from our membership center in the central Rockies. If you are interested in attending or assisting with the coordinator of a 2007 conference in Juneau, please take time to write me of your interest in the location or its arrangements.

The MHA Council reviewed and revised the organization By-Laws during the June 18 Council meeting. The revised By-Laws will be submitted to the State of Colorado, and Word copies are available by sending an email request to [RonBrown@txstate.edu](mailto:RonBrown@txstate.edu). The Council also expressed its sincere thanks to Mark Vendl, who served as the MHA Secretary for the past two years.

Ron Brown, MHA President

## Membership Dues

Several members who had already paid their 2004 dues sent in additional dues with the renewal form in the last newsletter. That renewal form was only for members who had not yet paid dues for 2004. It is the practice of the MHA to collect dues at the beginning of the calendar year and a reminder letter is sent out in January to let you know. If you paid dues at the beginning of 2004, you do not need to send in more dues until 2005 when you receive another letter.

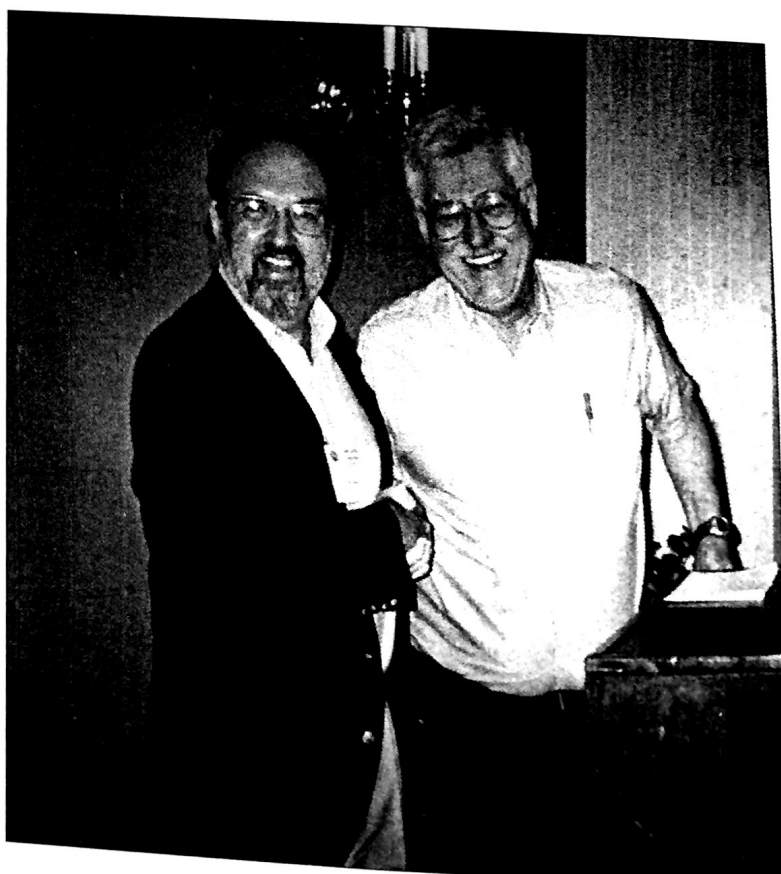
Please check your mailing label. If 2004 is indicated on it, you are paid up thru 2004 and thus are current with your dues. For those that paid twice for 2004, I have credited your membership for next year's dues and you are therefore paid thru 2005. Please remember that the year indicated on your mailing label is the year for which you have paid your dues.

Robert Sorgenfrei

## 2004 Rodman Paul Award Recipients



Lee Swent receiving award from President Ron Brown in Farmington



Jay Fell receiving award from President Ron Brown in Farmington

# SIXTEENTH ANNUAL CONFERENCE OF THE MINING HISTORY ASSOCIATION



**SCRANTON, PENNSYLVANIA  
JUNE 16-19, 2005**

The sixteenth annual conference of the Mining History Association will be held in the heart of Pennsylvania's anthracite coal mining region and near historic metals-mining locales in Pennsylvania and adjacent states. The conference will take place in Scranton, Pennsylvania, and will highlight an underground tour of the Lackawanna coal mine, the Pennsylvania Anthracite Heritage Museum, a Sunday tour to the New Jersey Zinc Mining District including the Sterling Hill Mine and Franklin Fluorescent Mineral Museum, and an optional post-conference tour on June 20th. For inquiries contact: Johnny Johnson, 2622 Deer Park Road, Finksburg, MD 21048, email: [Johnnyj@qis.net](mailto:Johnnyj@qis.net)



## **CALL FOR PRESENTATIONS**

The program committee for the Scranton meeting invites proposals for individual presentations or complete sessions (including chair) on any topic or aspect of mining history. Sessions normally include three papers of twenty minutes each. There are no temporal or geographic limits.

Proposals should include title of presentation, an abstract (not to exceed one page) for each presentation, plus biographical information about each presenter (including mailing/email address) and session participant. Please note, speakers must register for the conference in order to give their presentations. Please send the written proposals to the program committee chair by **November 30, 2004**.

**Richard Francaviglia, Program Chair  
The University of Texas at Arlington**

**The Center of Great Southwestern Studies and the History of Cartography  
Box 19497  
Arlington, TX 76019**

# What I Did on My Summer Vacation

## Gold Hill MHA Mini-Conference

### August 13—15, 2004

*Dear Diary,*

People began to arrive at the Blue Bird Lodge in Gold Hill on Friday afternoon. A lot of folks went on a walking tour of the town, and Silvia Pettem led a tour of the Gold Hill cemetery. For dinner, we had barbequed chicken/quiche out behind the lodge. After we ate our fill, we hiked up to the Gold Hill Museum for 2 great talks on the area: Ed Raines set the stage by describing the geological setting and the mining history of the area, and Silvia Pettem discussed the social history. Diary, did you know that from the 1920s to the 1950s the Blue Bird Lodge was a retreat for Chicago-area professional ladies??

The next morning we left bright and early on a day-long caravan tour to a number of places in Boulder County. We began Saturday's excursion at the original Gold Hill town site, Horsfall Flats and the Hors-



*Group photograph in front of the Cross mine*

fall mine. After that it was on to the Snowbound mine between the towns of Gold Hill and Sunshine. It was operated from the 1920s to the 1940s, but the hoist house looked like the miners had just stepped out for lunch! Everything was still in place! Next on the tour was the still-standing headframe of the Blue Jay mine in Jamestown. The Blue Jay was a fluorspar mine that was an important contributor to Boulder County's WWII effort. From the Blue Jay, we traveled to the Modoc Mill (an old gold mill - complete with stamps - that the owner has restored and converted to a residence). It was great climbing down the 3 stories of the building and seeing all the workings of the mill. We scattered around the grounds to eat our box lunches at the Modoc.

After lunch we went to the Primos Mill and the Lakewood town site; then on to the Conger mine. After a bathroom/snack break at Nederland, we proceeded to the Wallstreet Mill, where the "mountain goats" in the group hiked up to the upper workings. Our final stop for the day was Copper Rock, which Ed told us was part of a fracture system through which the telluride ore solutions passed on their way



*Interior view of the Snowbound mine hoist house*





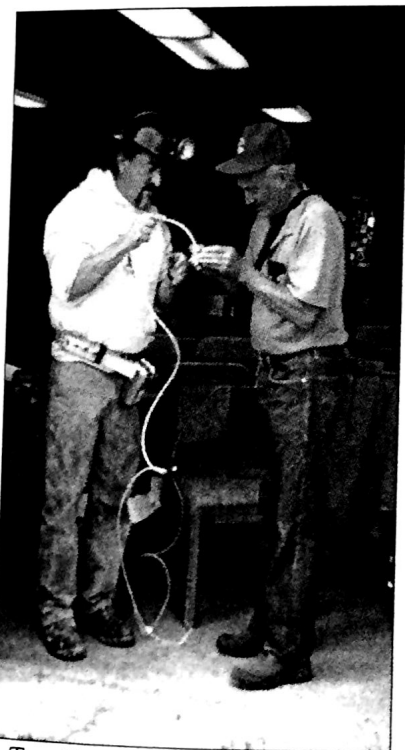
*Ed Raines leading the Saturday field trip*

from the Sugarloaf Intrusive Center to the Gold Hill veins.

Dinner Saturday evening was a gourmet event at the Gold Hill Inn next door to the Blue Bird Lodge in beautiful, downtown Gold Hill. Some of us "crashed" after dinner, but the hardier folks stayed up and socialized over a few glasses of wine.

Sunday morning we carpoled to the Cross mine,

where owner and host, Tom Hendricks, talked about his operation. We got to hear the explosion as Tom detonated 1/2 stick of explosive behind the mine building. Also at the Cross mine, Duane Smith gave some very interesting background into Caribou, which was a silver camp just up the hill from the Cross mine, and which was Duane Smith's "first



*Tom Hendricks and Duane Smith lighting the fuse (Duane's hands shaking!)*

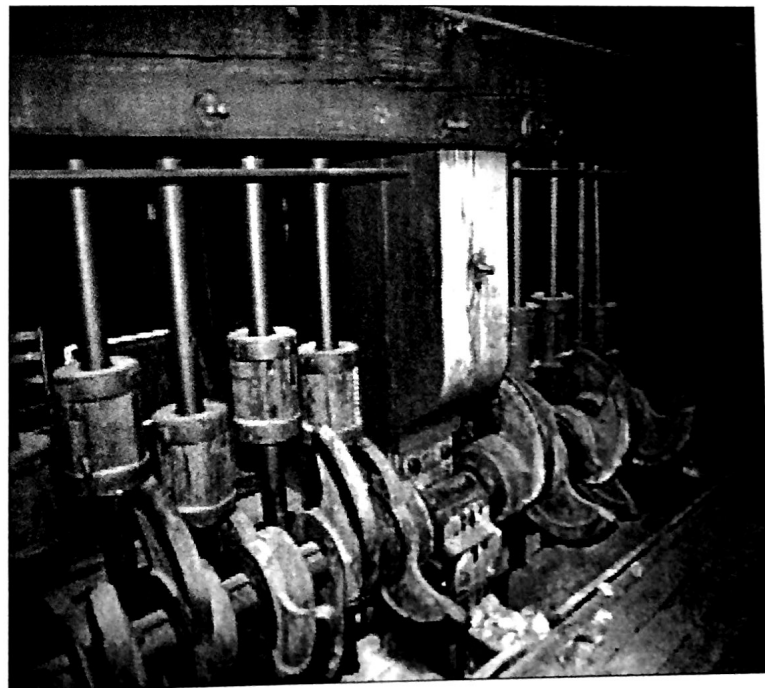
love". Then we formed 2 groups and while the first group was underground, the second group went up the hill to Caribou, where Duane regaled us with stories from Caribou. The groups then switched places, and after that, the mini-conference was over, and everyone went their separate ways.

Diary, this was a really great conference! It was fun to immerse myself in the history of an area - the places we saw seemed to come to life! Thanks to Silvia, Ed, Duane and Tom for a great weekend! I hope we can have more mini-conferences!

Karen Vendl  
La Grange Park, IL



*Blue Jay mine*

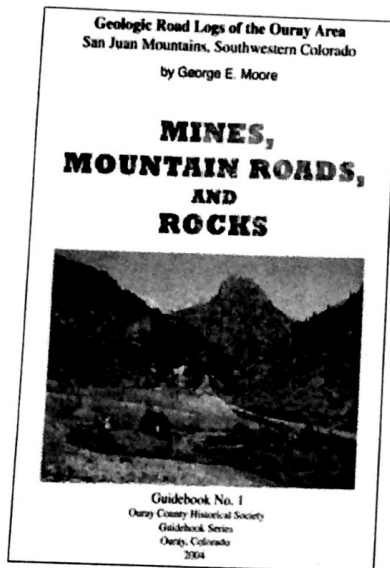


*Stamps inside Modoc mill*

# New Books

## Mines, Mountain Roads, and Rocks

by George E. Moore



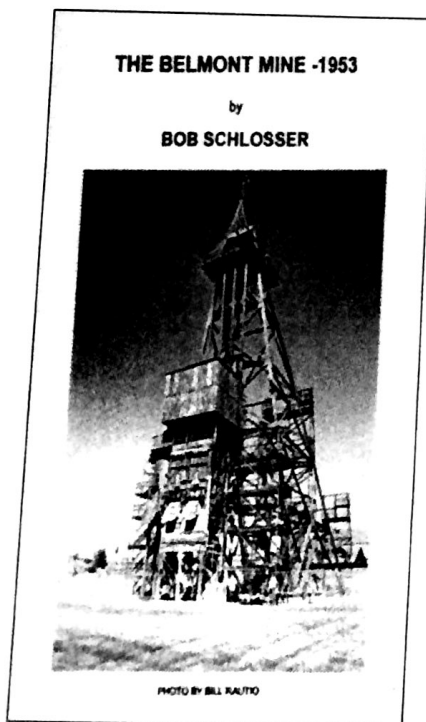
This well-illustrated publication discusses how the northwestern San Juan Mountains and the rich ore bodies they contain formed and describes the historic mining districts of the area. It provides point-by-point de-

scriptions of the mines, rocks, and other features along the roads and jeep trails that provide access to the mountains.

250 pages, 14 road logs, 21 topographic route maps, over 100 color illustrations and photographs, 133-entry glossary, softcover, spiral bound, \$29.95 plus sales tax if applicable, \$5.00 shipping and handling. Available by mail from the Ouray County Historical Society, P. O. Box 151, Ouray, CO 81427, Phone: 970-325-4565 or 970-325-4075, Email: ochs@frontier.net.

## The Belmont Mine—1953

by Bob Schlosser



In the 1950s, Butte, Montana was the epitome of underground, hardrock mining in the United States. Bob Schlosser reported for work at the Belmont Mine in 1953, fresh from graduation as a mining engineer from the School of Mines in Colorado. Schlosser describes the months that

mining practice or by an experienced miner recalling some of his first months on the job. The valuable insights provided by the author's various partners are not neglected, for these turned out to be an integral part of his experience as a participant in the Anaconda Copper Company's management training program. Years later, after moving up the management ranks, Schlosser reflected on his months in Butte's hottest mine as some of the most valuable training that he had experienced. The pen & ink drawings of Albert "Albo" Gibson, illustrating the various aspects of underground mining, augment the carefully crafted descriptions by the author.

2003, 50 pages, 7 pen and ink drawings, spiral binding, laminated cover, \$14.99, shipping free. Publisher: Robert Schlosser, 749 Amelia Avenue, Brownsville, Oregon 97327, (541) 466-5871, e-mail bobnjun2slow@peak.org.

followed as he advanced from pounding boulders on the grizzly to driving drifts, raises and stopes including blasting and timbering. Each phase is narrated in a clear, concise manner easily understood by those never exposed to underground work, a researcher on

# Clark C. Spence Award



The Mining History Association is pleased to announce that it is accepting nominations for the second biennial Clark C. Spence Award for the outstanding mining history book. Clark Spence is a pioneer in the study of mining history, as well as one of the founding fathers of the Mining History Association. This award will be given for books published in 2003 and 2004. Publishers and authors are encouraged to submit their nomination, plus three copies of the book by **January 31, 2005** to:

Mining History Association  
Colorado School of Mines Library  
1400 Illinois St.  
Golden, CO 80401

## Support Your Association's Journal



The Editor of *The Mining History Journal* invites you to submit manuscripts on various aspects of mining history that will inform our membership. Manuscripts should be submitted in typescript, double-spaced with endnotes on an IBM compatible computer disk, in addition to a paper copy. Microsoft WORD or Wordperfect formats are required. Illustrations should not be embedded in the article (their location should be marked in the article text). All articles are required to follow style formats as specified in the *Chicago Manual of Style* (14th edition). Manuscripts for the Journal should be submitted to: Eric Clements, Mining History Journal, Southeast Missouri State University, Department of History MS2960, Cape Girardeau, MO 63701, [eclements@semovm.semo.edu](mailto:eclements@semovm.semo.edu).



**MHA's Mining History Breakfast**  
**44th Annual WHA Conference**  
**7:00 am, Thursday, October 14, 2004**  
**The Riviera Hotel & Casino, Capri 103**  
**Las Vegas, Nevada**



Mining History Association  
Colorado School of Mines Library  
1400 Illinois St.  
Golden, CO 80401

FIRST CLASS MAIL



## *Mining History Association*

The *Mining History News* is published quarterly by the Mining History Association. It is sent to MHA members who also receive the annual *Mining History Journal*. MHA is an organization of individuals interested in the history of mining and metallurgy. Annual membership: general \$25, international \$35, sustaining \$50, patron \$100, and corporate \$500. Send check or money order payable in U.S. funds to the Mining History Association, Colorado School of Mines Library, 1400 Illinois St., Golden, CO 80401.

Website: [www.mininghistoryassociation.org](http://www.mininghistoryassociation.org)

Submissions for the newsletter are encouraged and should be sent to Mark and Karen Vendl, email: [mkvendl@earthlink.net](mailto:mkvendl@earthlink.net)

Deadlines:      March issue: February 15  
                      June issue: May 15  
                      September issue: August 15  
                      December issue: November 15

Change of address : Please send any changes to your address to Robert Sorgenfrei, membership, Mining History Association, Colorado School of Mines Library, 1400 Illinois St., Golden, CO 80401.

Ron Brown, president  
Robert Weldin, vice-president  
Ed Hunter, past-president  
James E. Fell, Jr., treasurer  
Robert Sorgenfrei, membership  
Ruth Ann Gardner, council member, 2002-2004  
James McBride, council member, 2002-2004  
James Sell, council member, 2002-2004  
Silvia Pettem, council member, 2003-2005  
Duane Smith, council member, 2003-2005  
Robert Trennert, council member, 2004-2006  
Erik Nordberg, council member, 2004-2006